



Wilber Associates
 Architecture / Planning
 P.O. Box 428 - 20044 N. Zion St.
 Cornelius, N.C. 28031
 704-892-3633

NOTE
 This drawing is property of the firm, Wilber Associates. Reproduction or reuse in part or in whole without written permission is forbidden.

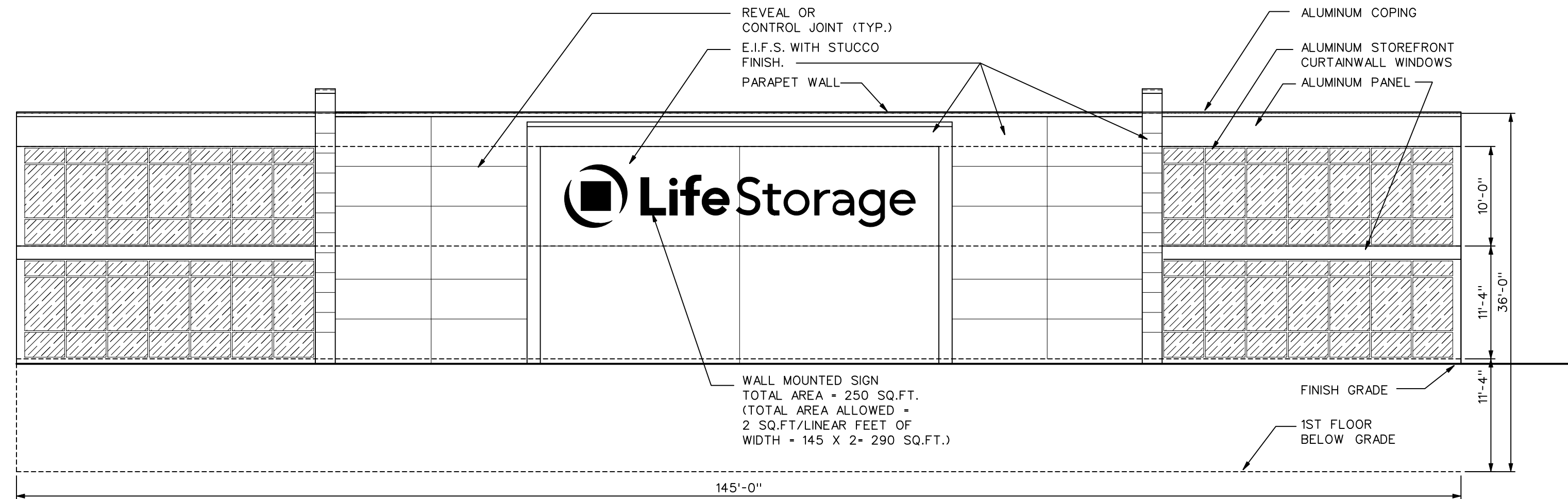
SEAL

TITLE

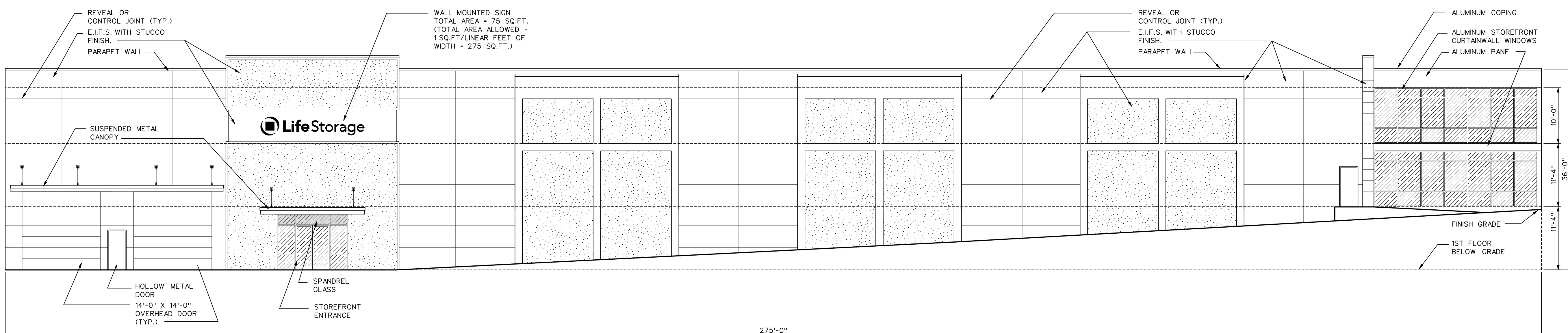
A NEW MINI-STORAGE BUILDING FOR
LIFE STORAGE - CATAWBA COUNTY
 HWY 150
 DENVER, NORTH CAROLINA

COMM. NO. 22-22
 DATE 3/9/22
 REVISIONS

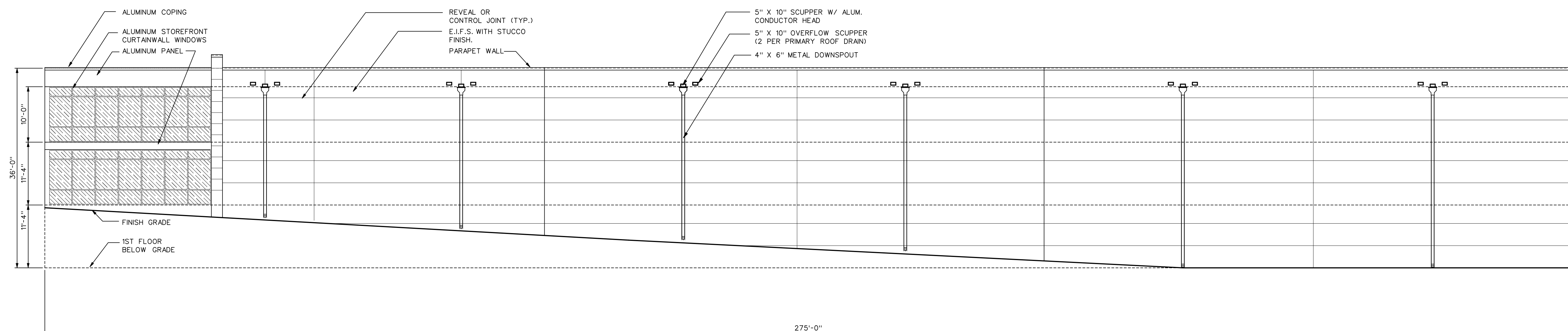
SHEET
SKA-1
 OF
 1



STREET FRONT ELEVATION
 1"=10'-0"



PARKING SIDE ELEVATION
 1"=10'-0"



SIDE ELEVATION
 1"=10'-0"