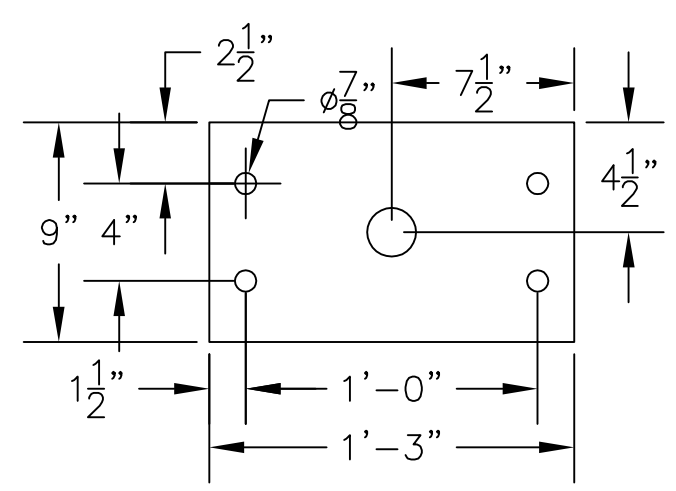


3/4" MATCH PLATE w/
3/4" Ø A325 BOLTS (X4)

5" x 5" x .25 @ 18'-4 1/4" LG
(AUGERED)

GRADE



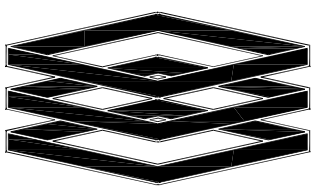
MATCH PLATE (SCALED: X4)
3/4" STEEL PLATE

AUGERED FOUNDATION:
4'-0" Ø x 5'-9" DP
TOTAL = 0.67 CU. YDS.

CUBED FOUNDATION:
(L x H x D)
4'-0" x 4'-0" x 4'-0" DP
TOTAL = 4.53 CU. YDS.

COLOR NOTES:
STEEL PAINTED BLACK

DRAWING APPROVAL	DATED:



ENTERA
Your total branding solution

1200 BELL AVE.,
PANAMA CITY, FL 32401
PH: 850.763.7982
FAX: 850.392.0723
www.enterabrading.com



CLIENT: DOLLAR GENERAL	DATE: 05/10/11
LOCATION: VILLA RICA, GA	SCALE: 1:32
DRAWN BY: HANK CULVER	Page Layout: PRESENTATION
FILE LOCATION: G/ENG/CC/DG	DWG. NUMBER: DGO02701