



Regional Educational Facilities Alignment



Exploring Options



County Commissioners' Work Session

M&KISSICK ASSOCIATES

July 21, 2025

Presenters

Vern L. McKissick III, AIA

McKissick Associates

Educational Planner | Architect

Kristen P. McKissick

McKissick Associates

GIS | Demographics

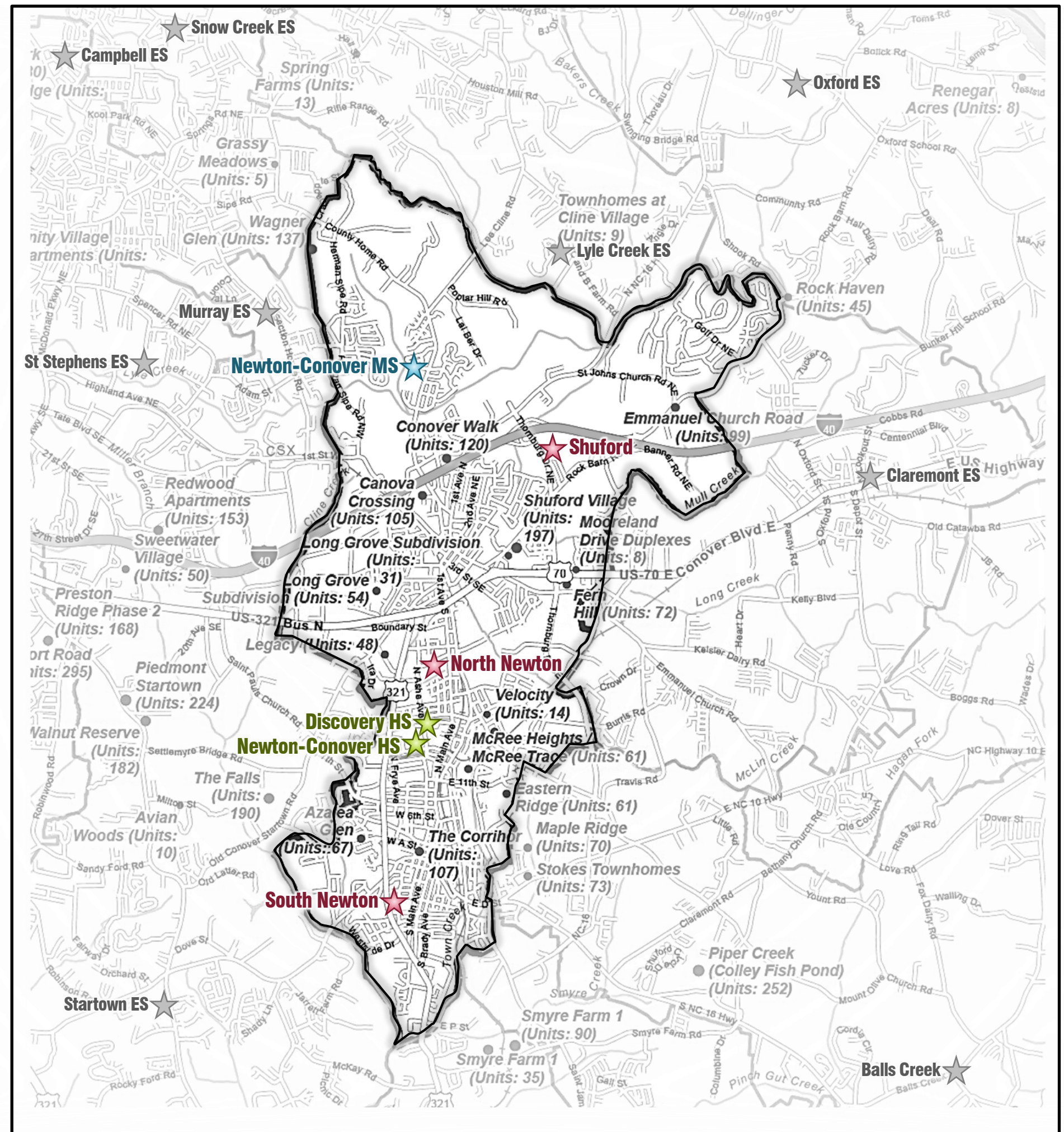
Background & Comparison...

- **School Locations**
- **Enrollment History**
- **School Capacities**
 - By Grade Level
 - Per School
 - Utilization with Current Enrollment
- **Projections & Growth**
 - From Live Births
 - From New Housing Construction
- **Implications of a County-Wide Approach**

Ease Capacity Pressure through Optimized Facility Use

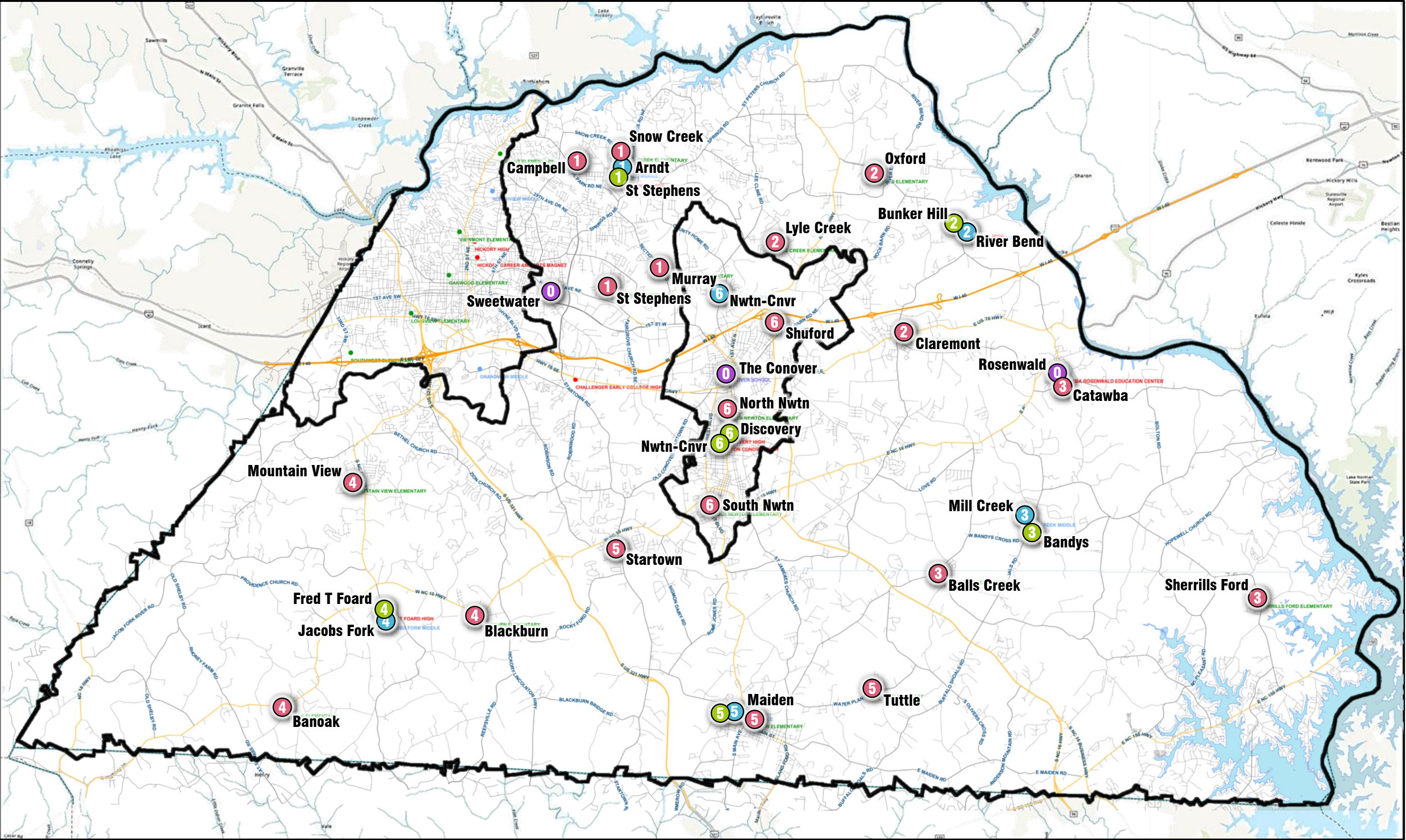
- **How can we optimize our facilities to accommodate existing and planned enrollment growth?**

- ★ **Elementary Schools**
- ★ **Middle Schools**
- ★ **High Schools**



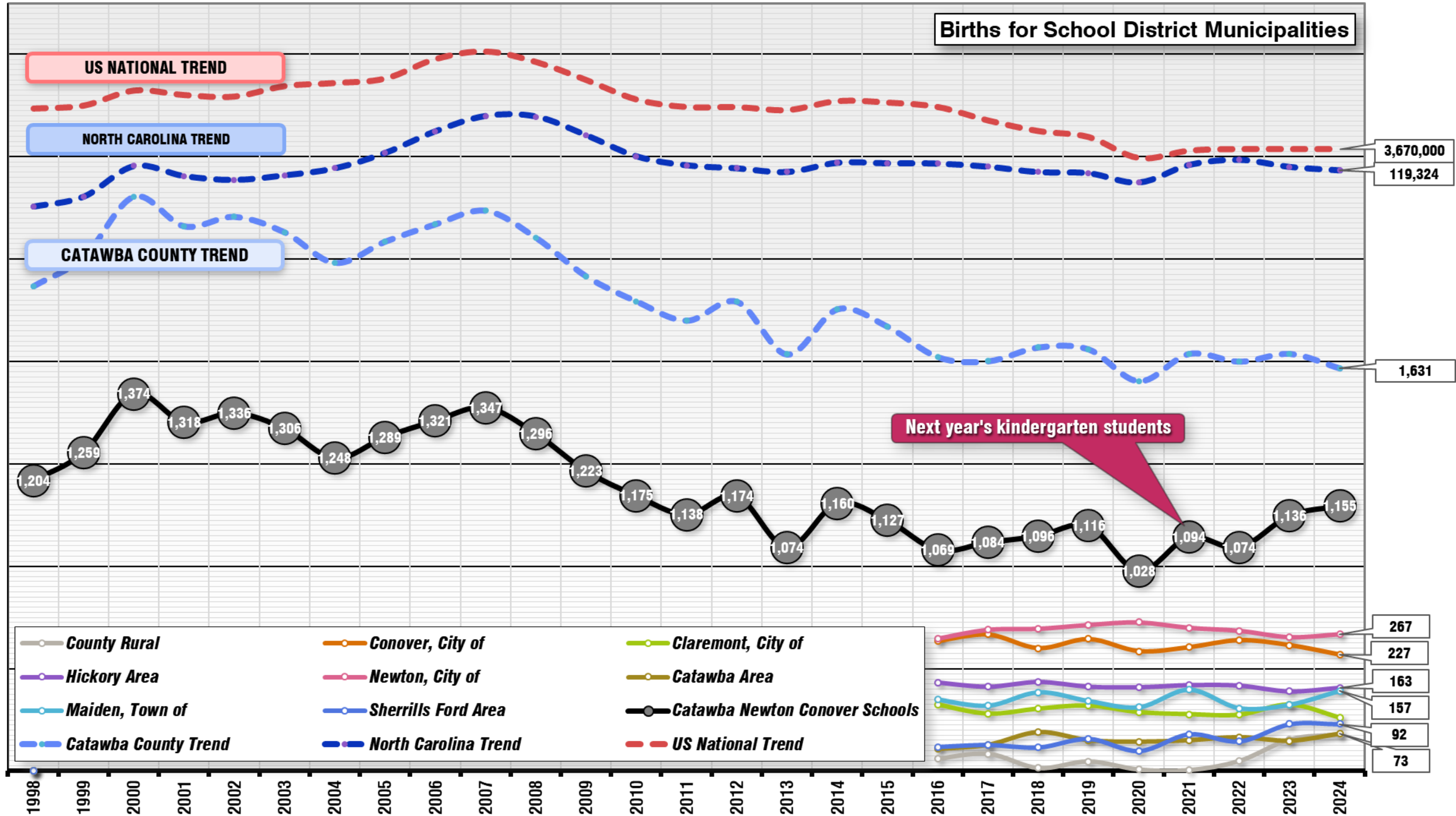
Catawba County Schools & Newton-Conover City Schools

- Elementary Schools
- Middle Schools
- High Schools
- Education Centers



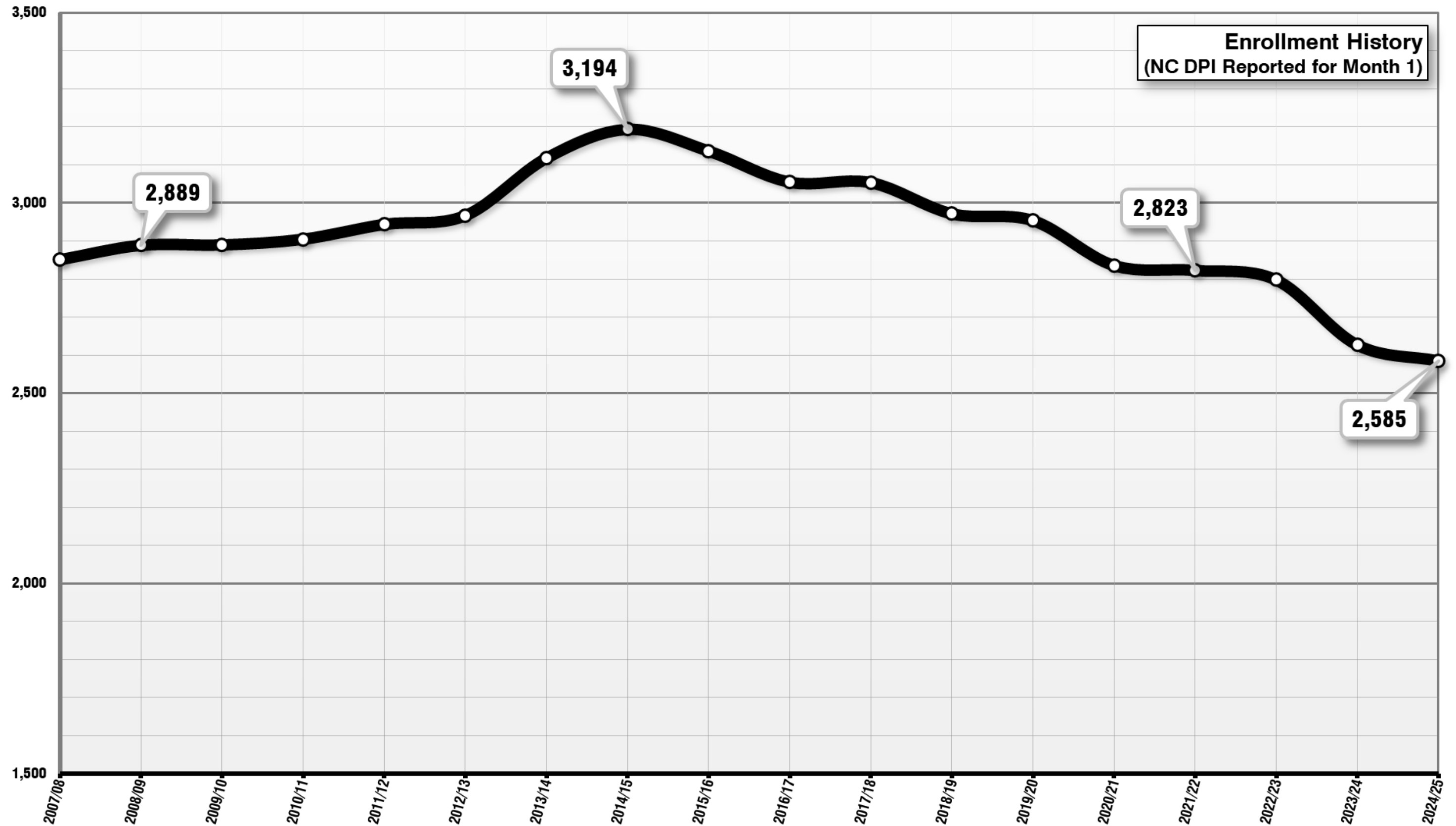
Contributing Municipal Births & Regional Trends

Combined Population



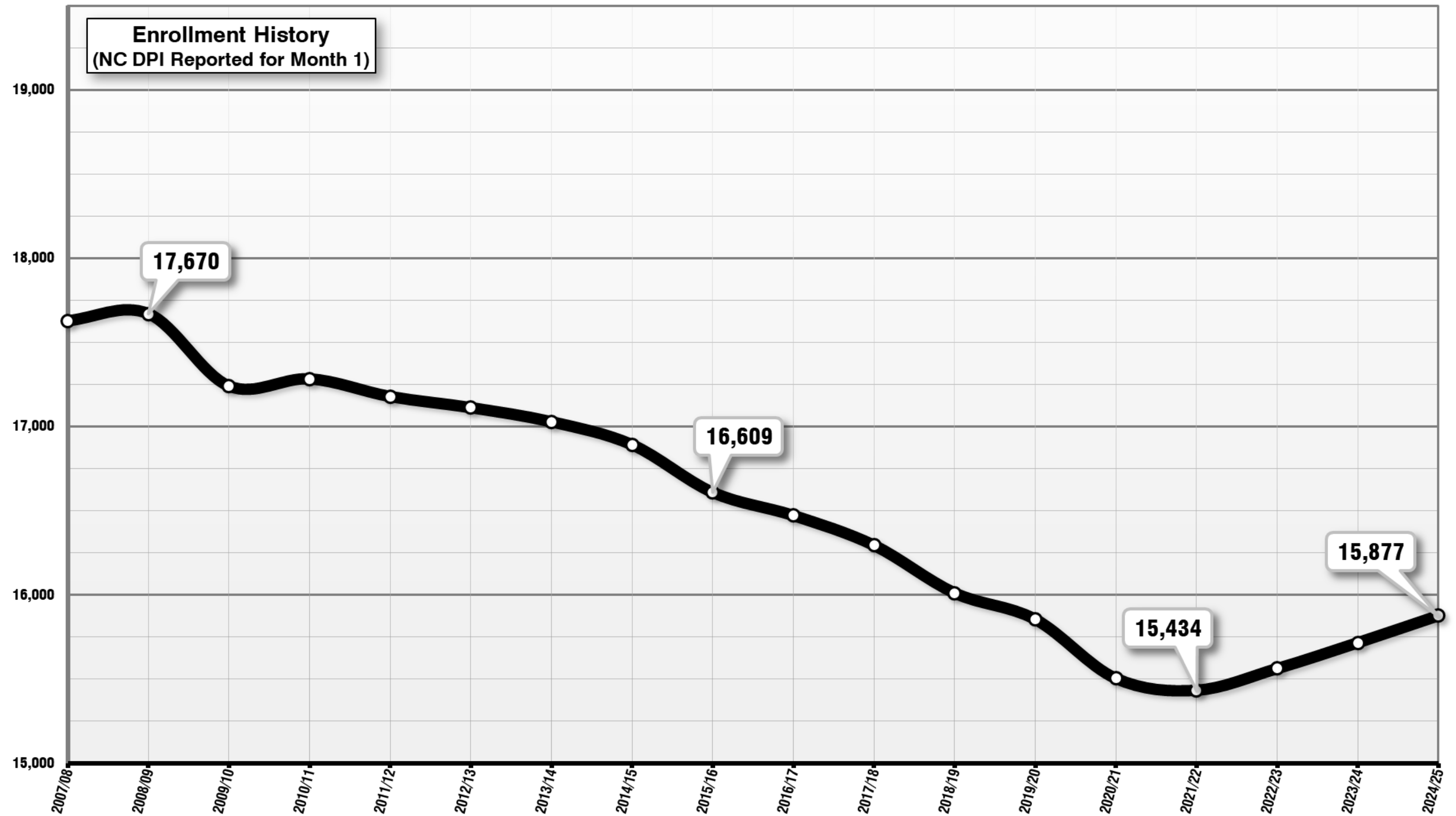
K-12 Enrollment History

Newton-Conover City Schools



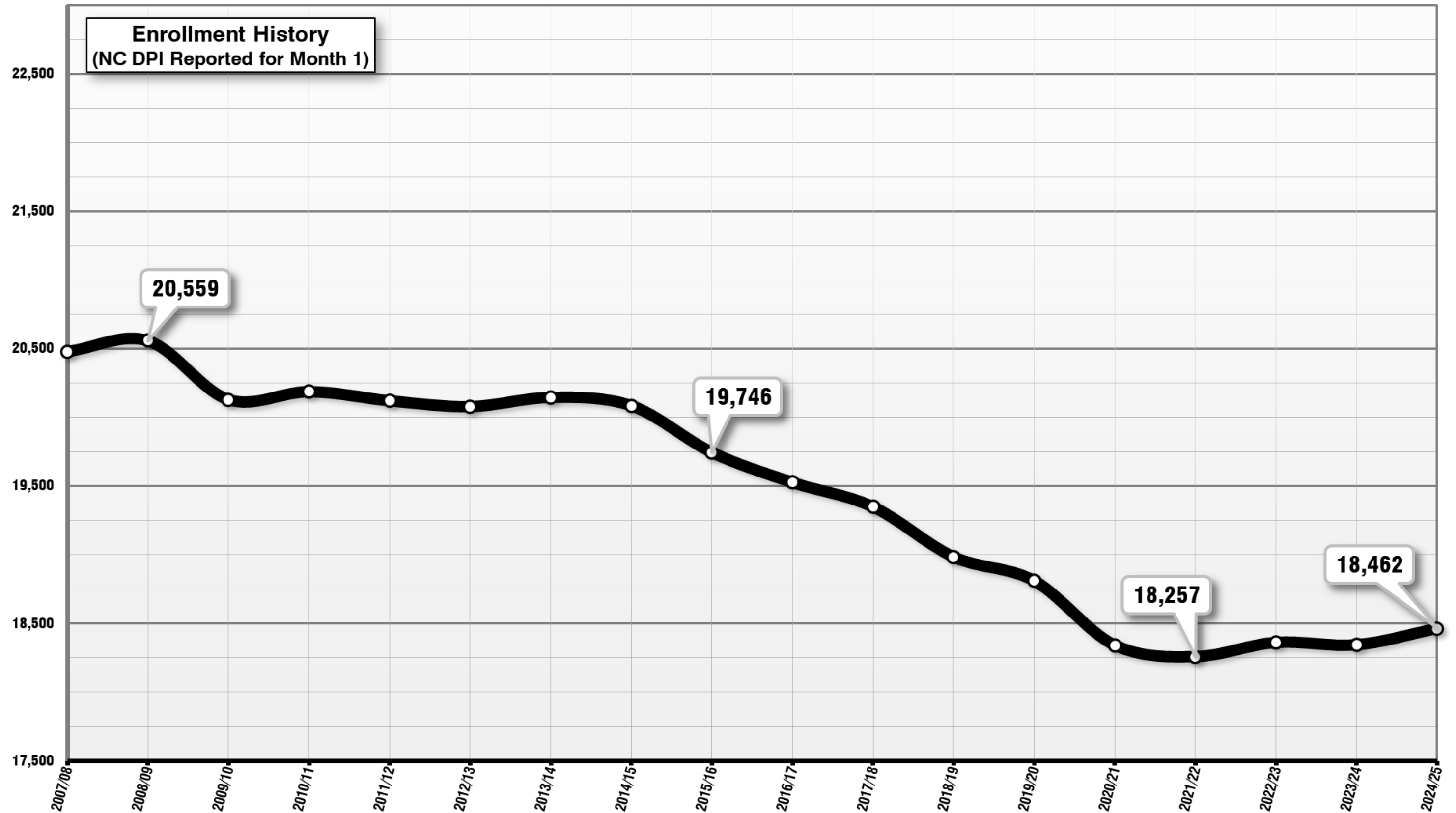
K-12 Enrollment History

Catawba County Schools



K-12 Enrollment History

Combined Population



NC Department of Public Instruction Capacity vs. “Practical Capacity”

DPI Capacity:

is based on simplistic scheduling and class sizes suitable for currently recommended instructional areas & sizes.

Practical Capacity:

is focused on how spaces are or can be used and scheduled effectively.

Practical capacities as we have computed them reflect specifically how the Catawba County Schools and the Newton-Conover City Schools currently use classrooms.

Consistent class size policies and adjustments for the use of smaller classrooms have been applied using the same methods for both districts.

Adjusted Buffer Capacity:

Capacities are computed with a buffer to accommodate for scheduling flexibility and variations between grade enrollments.

Elementary (grades K through 5) 85 %

- Elementary class scheduling is rigid with strict class size limitations, so 85% is used.

Secondary (grades 6 through 12) 80 %

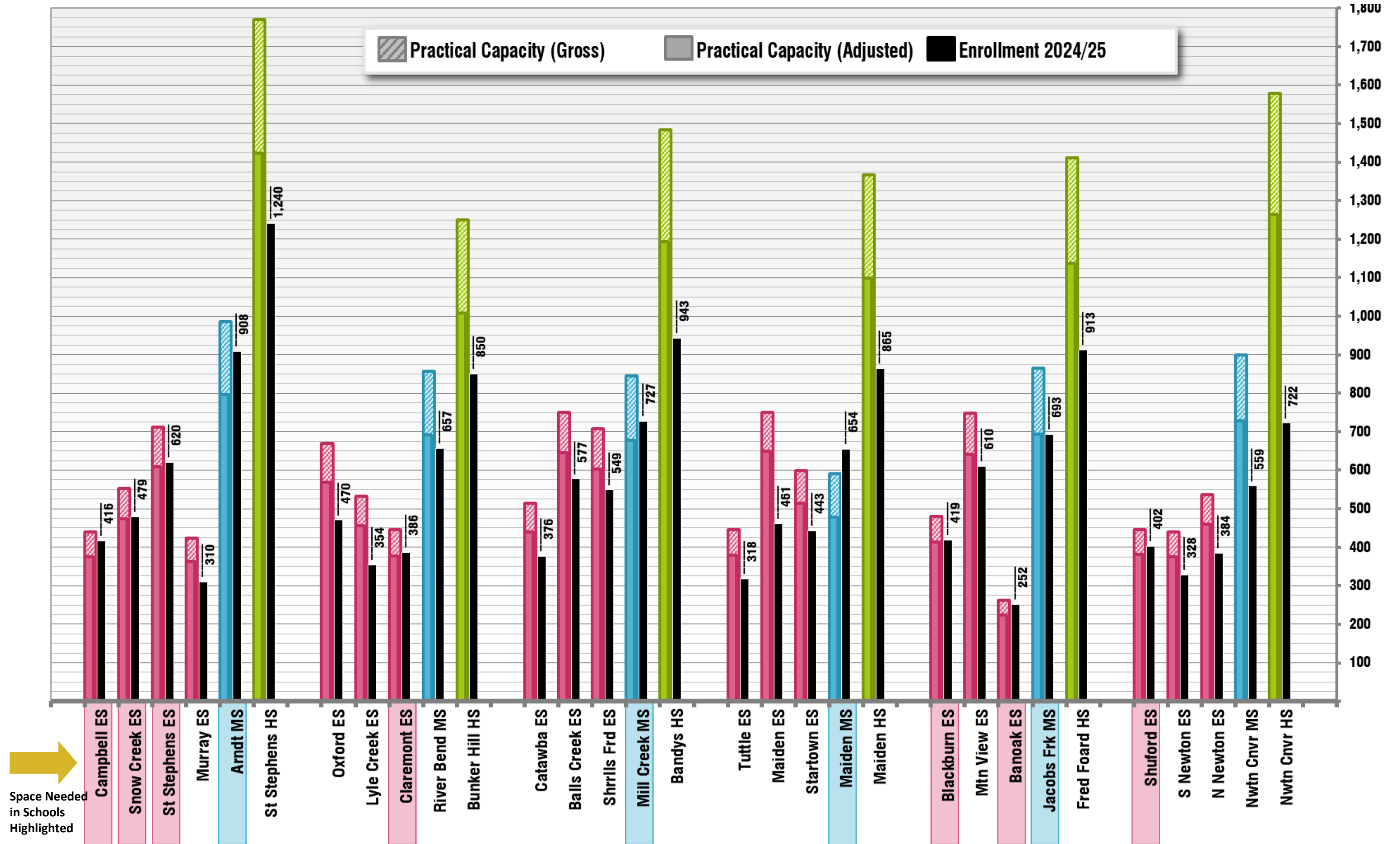
- 80% buffer space is required to accommodate the block scheduling used at the middle and high school levels.

Gross Capacity 100 %

- Gross capacity or 100% utilization is shown for reference. This is how many students can be seated in chairs, but not reflective of safe or effective educational procedures or guidelines.

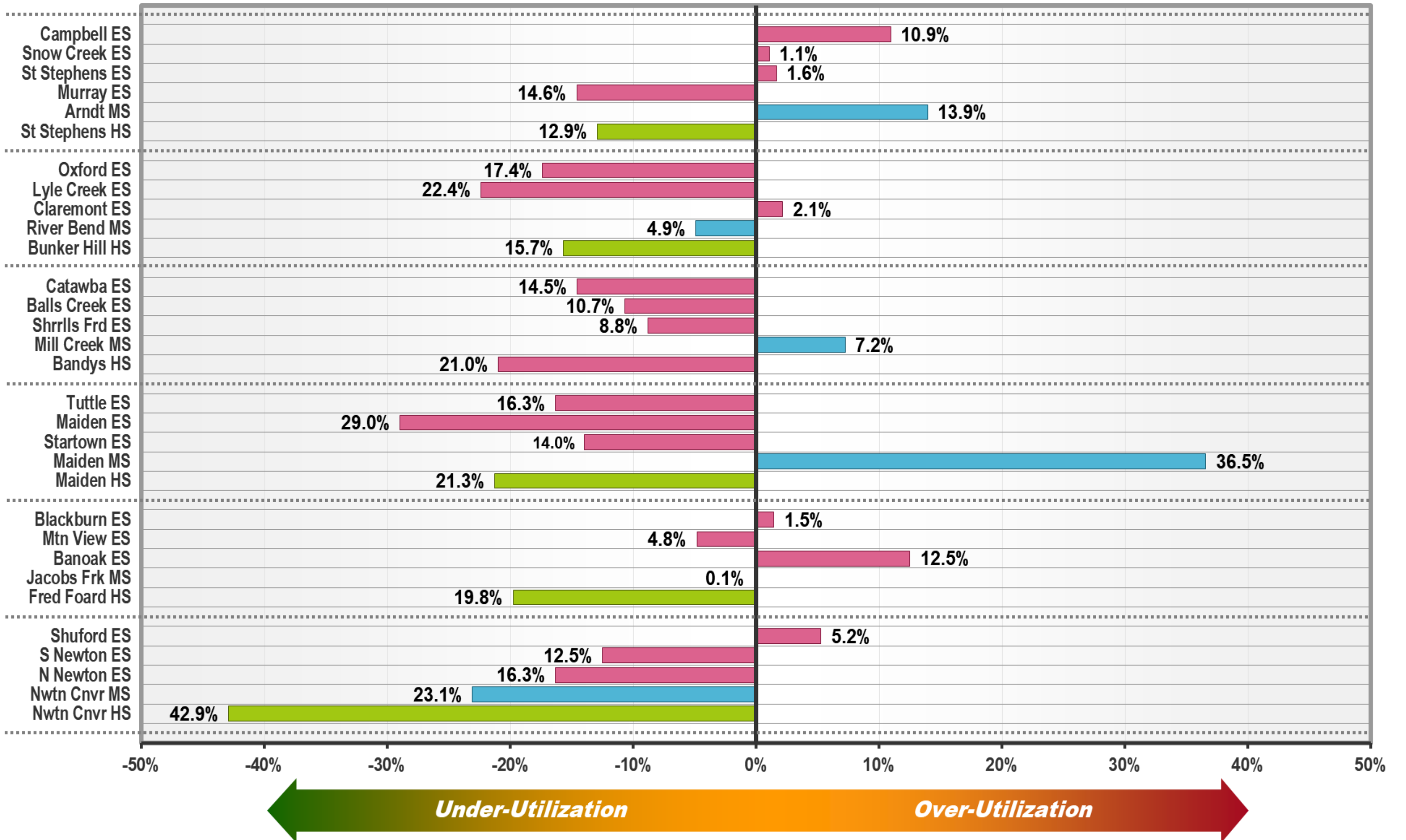
Existing Capacity and Enrollment Comparison

Combined Population



Utilization for Enrollment @ Buffered Capacity

Combined Population



Anticipating Students from Migration Growth

New Housing Units

- Based on visits with Municipality and County Planners collecting information about:
 - Type of housing unit and quantity to be constructed
 - Likelihood of development being completed (planning stage, developer history)
 - Timeframe for construction (construction start date and time to finish)

Total New Households

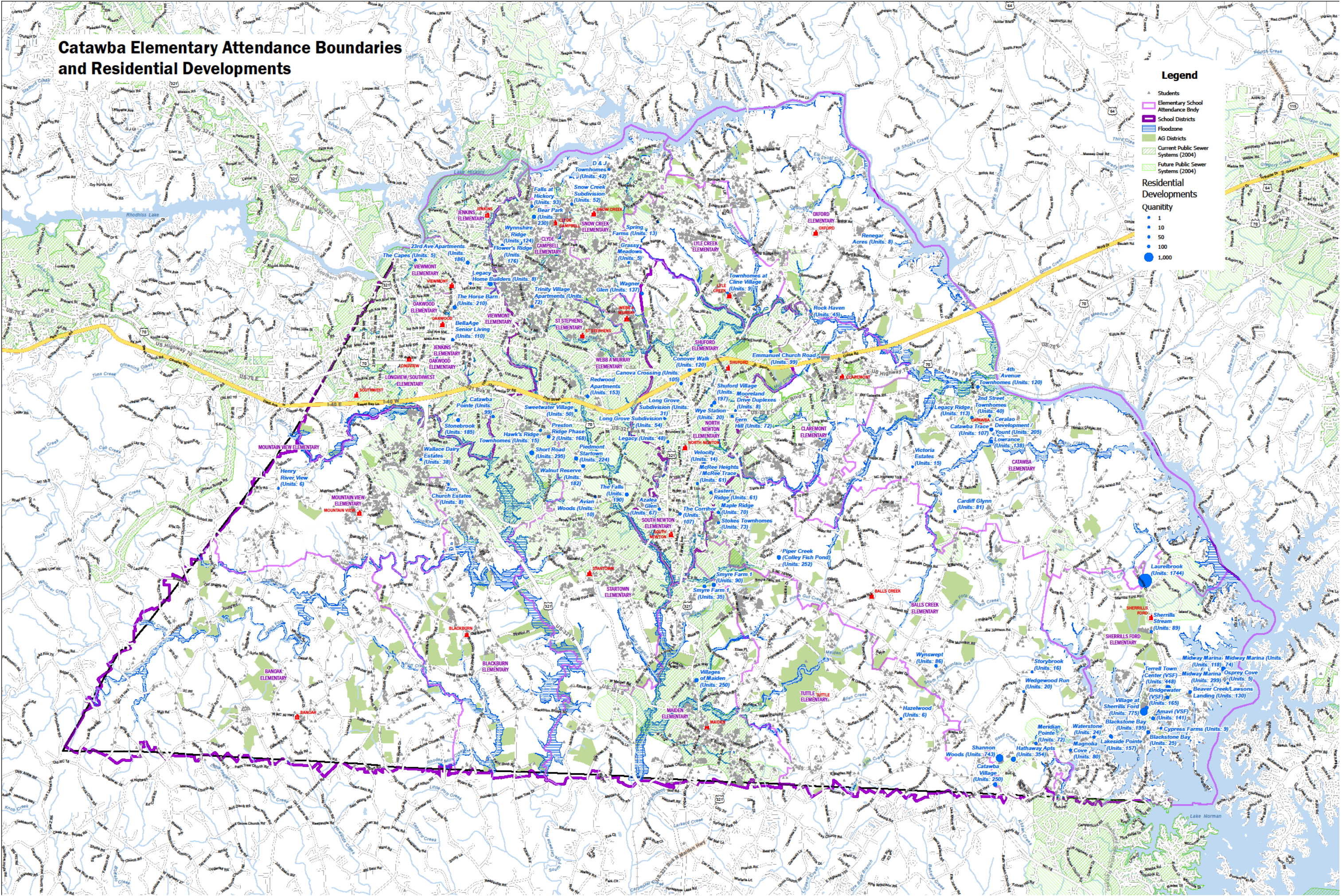
- Determined based on vacancy rate and type of unit

Households Likely to have Kids < 18

- Based on housing type and census tract statistics from 2020 with updates from 2022

Potential Students in Catawba County Schools

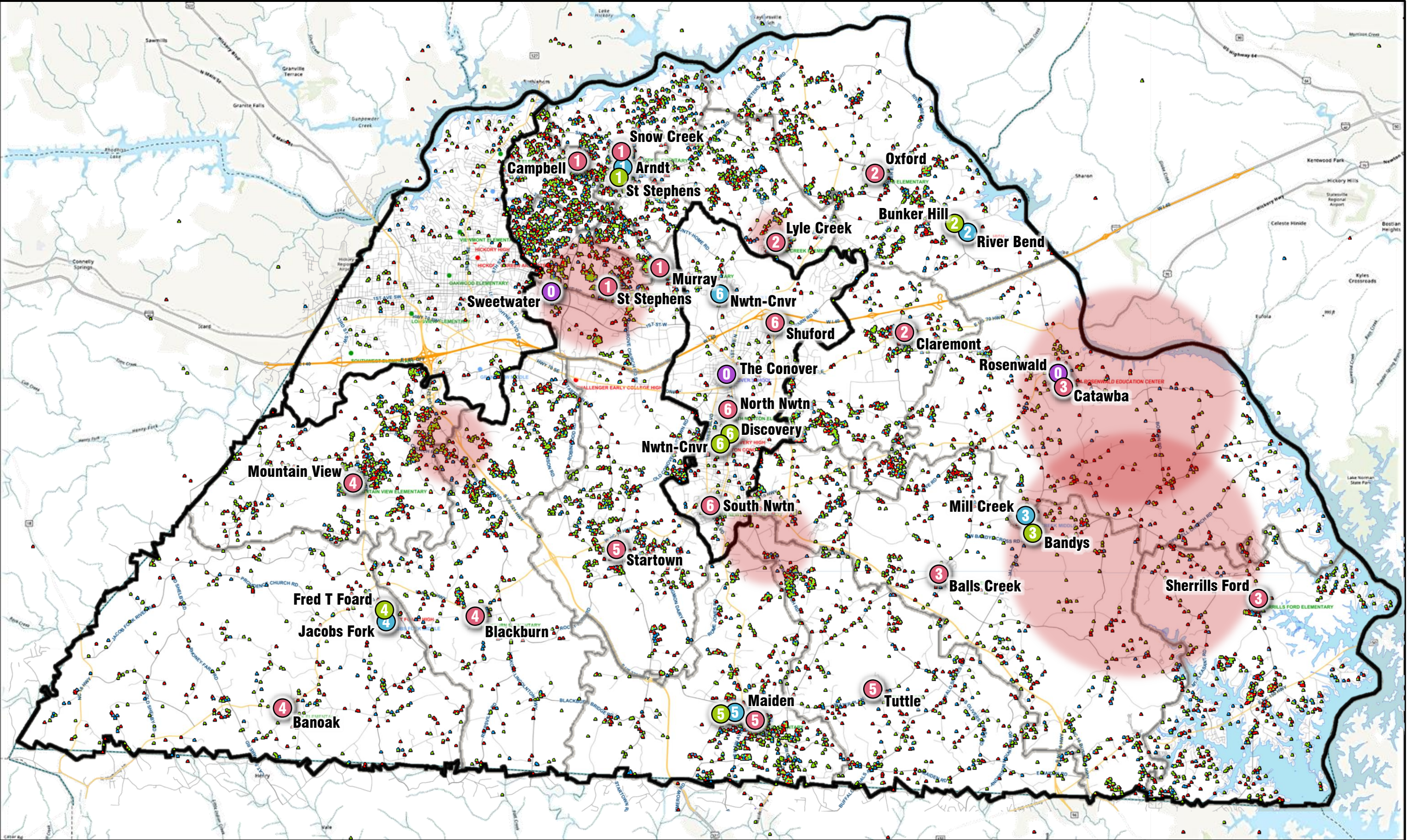
- Assumption that current private/public school pattern will continue with 10% private (religion-based, largely Lutheran)
- Assumption that the distribution of kids < 18 is likely to be weighted toward elementary age



Catawba County Schools

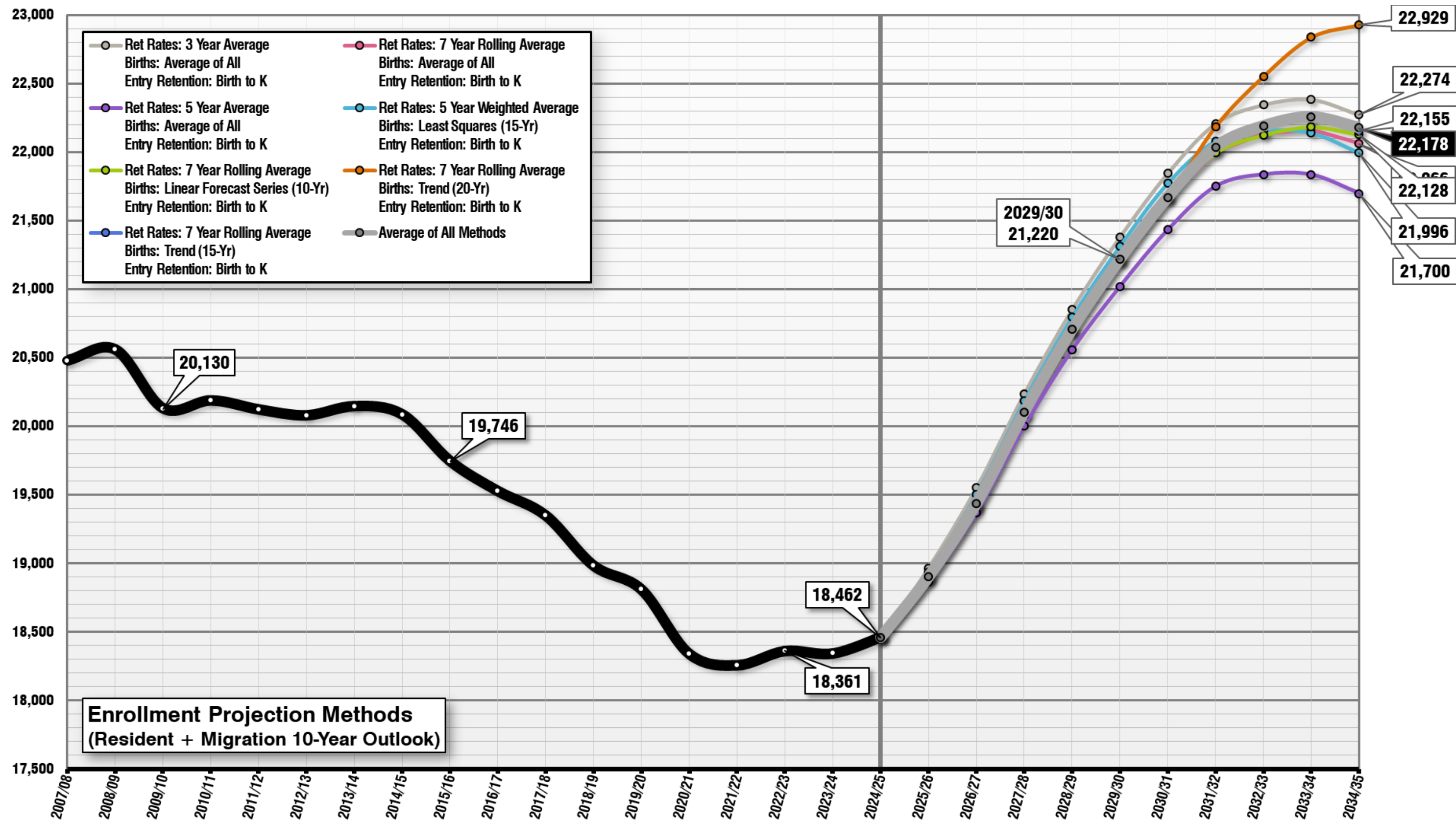
Schools, Students, Boundaries

- Elementary Schools
- Middle Schools
- High Schools
- Education Centers



Enrollment History & 7 Method Projection Average
Resident + Migration Growth (10-Year Outlook)

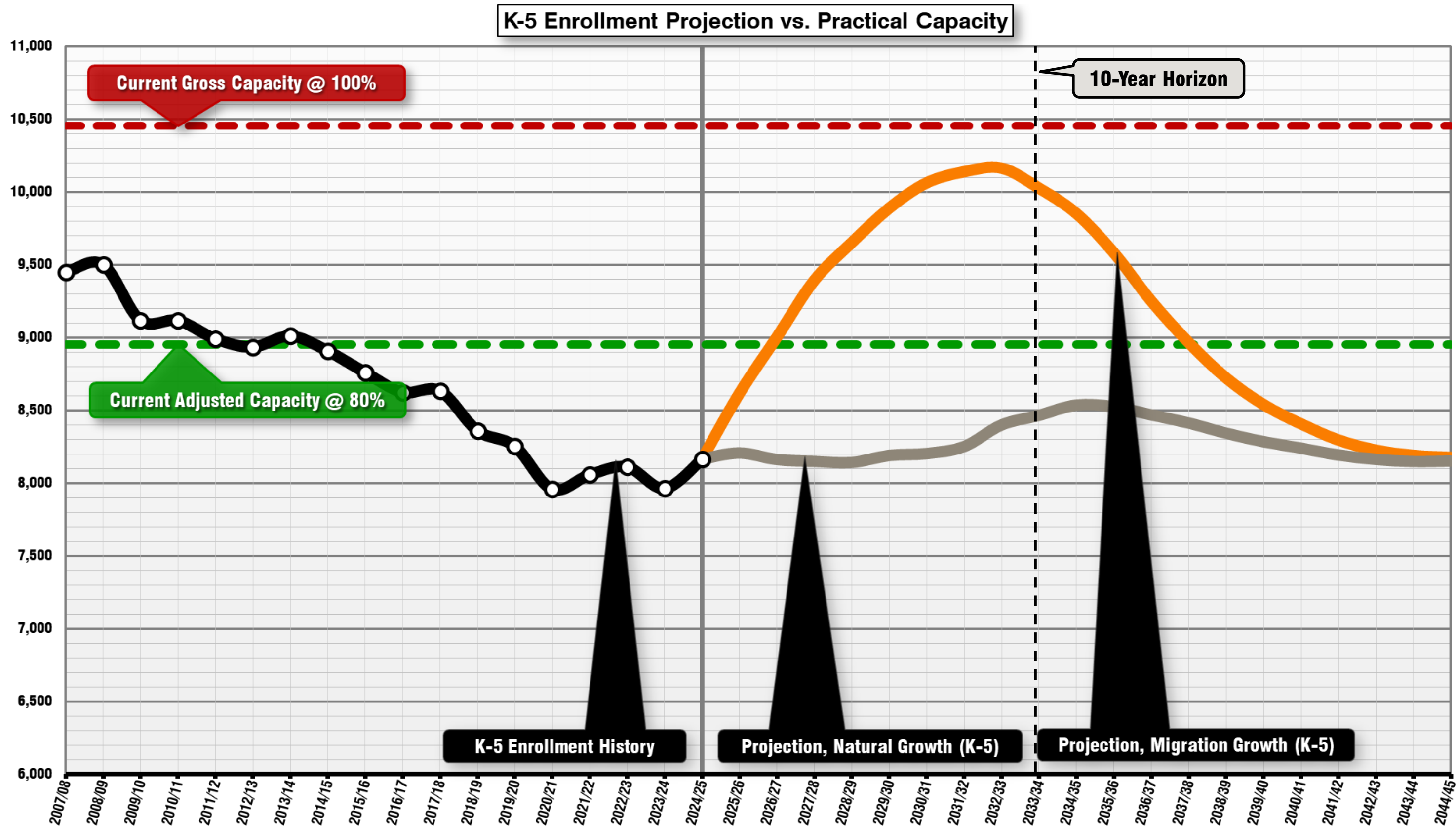
Combined Population



K-5 Projection vs. Capacity

Combined Population

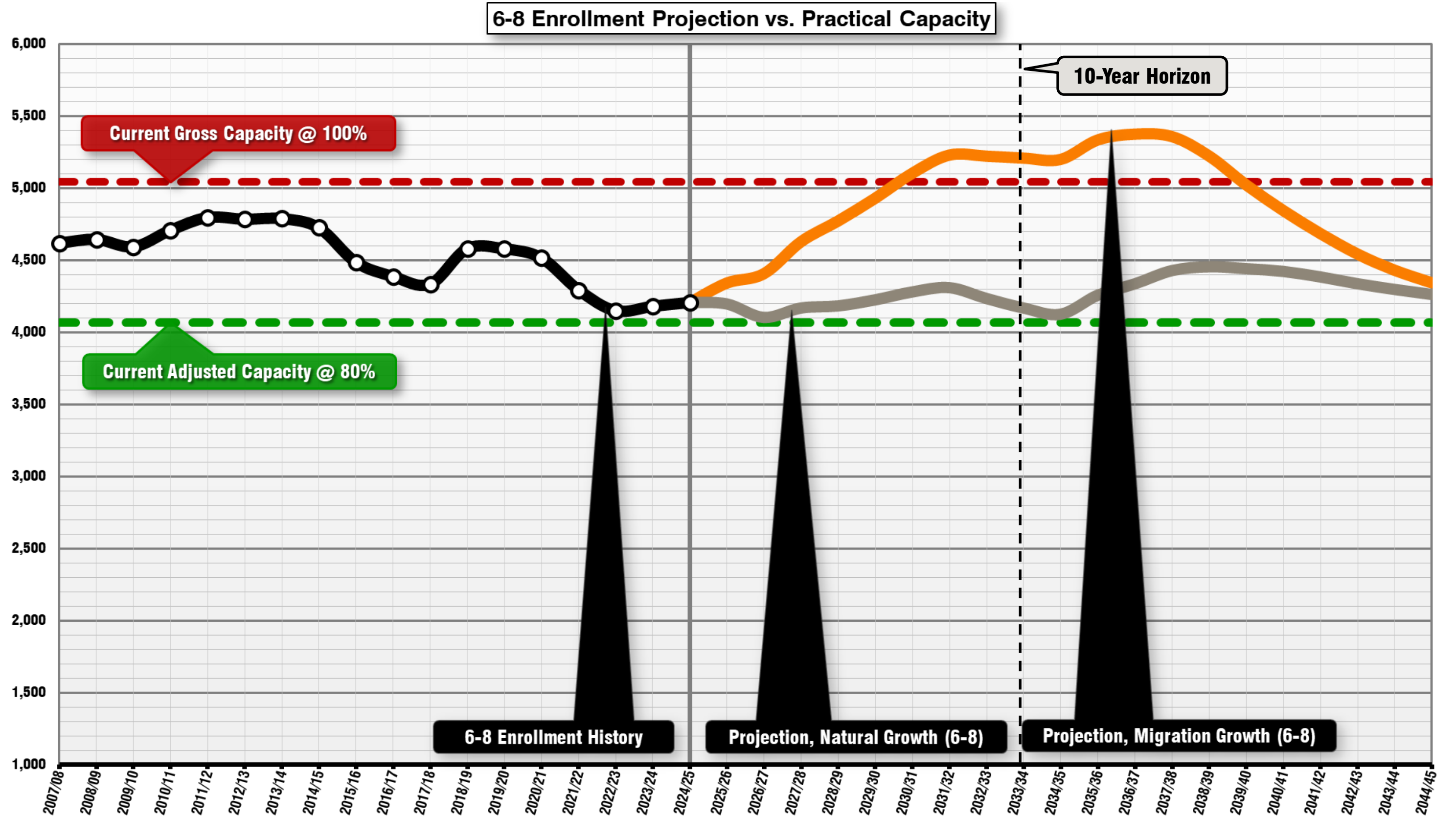
This represents the move of 6th grade into the middle schools for Catawba County Schools



6-8 Projection vs. Capacity

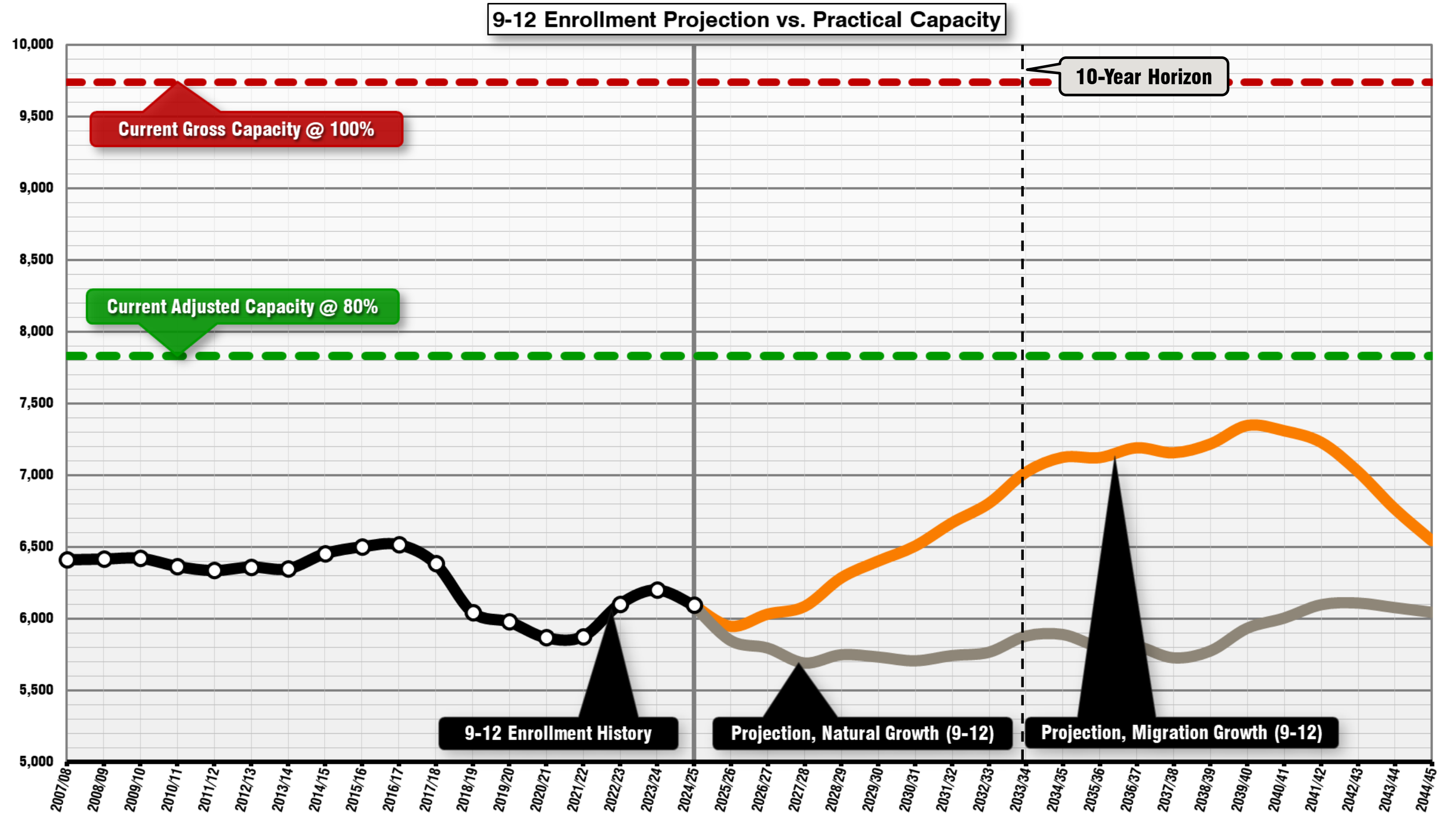
Combined Population

This represents the move of 6th grade into the middle schools for Catawba County Schools

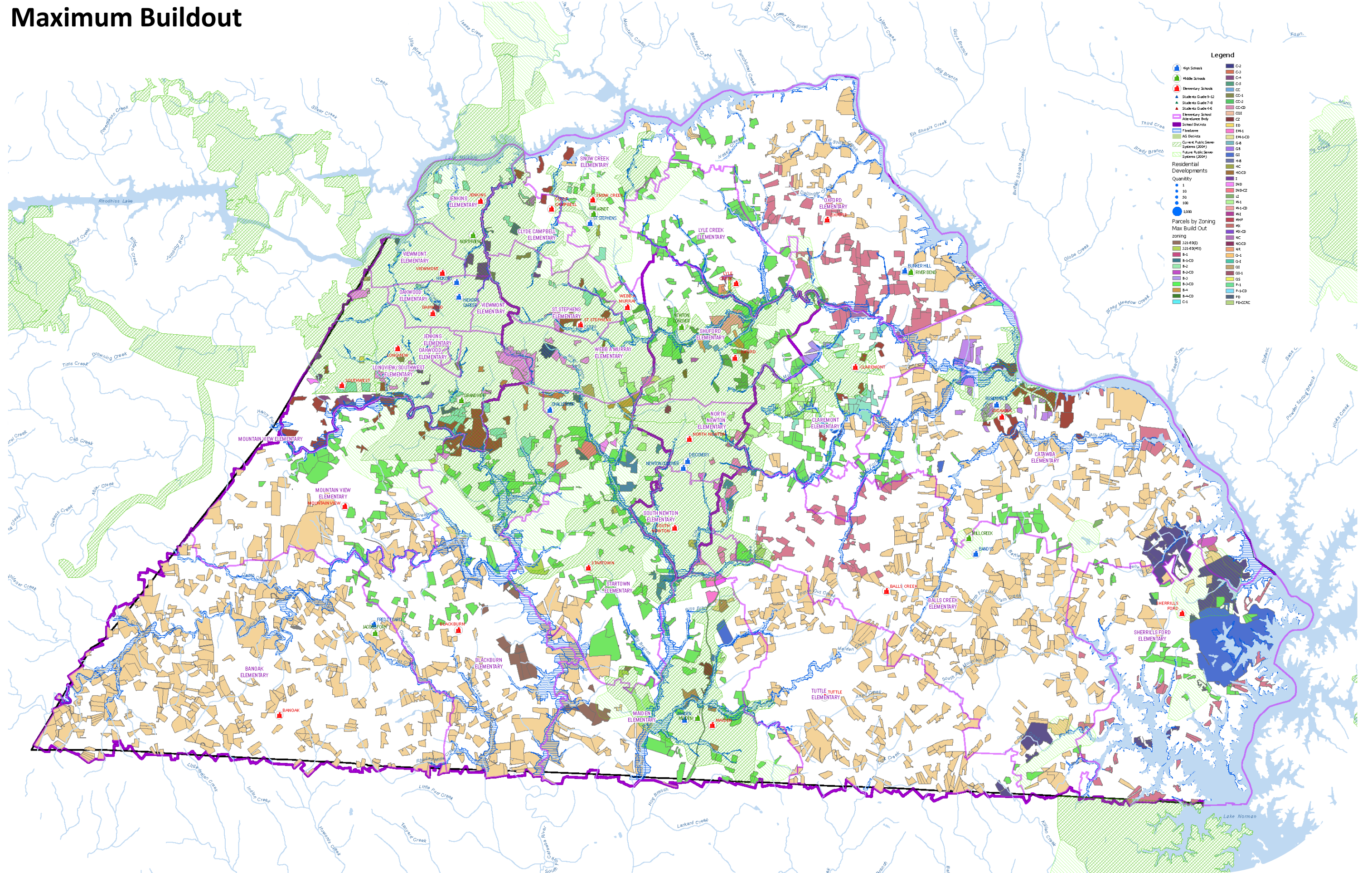


9-12 Projection vs. Capacity

Combined Population



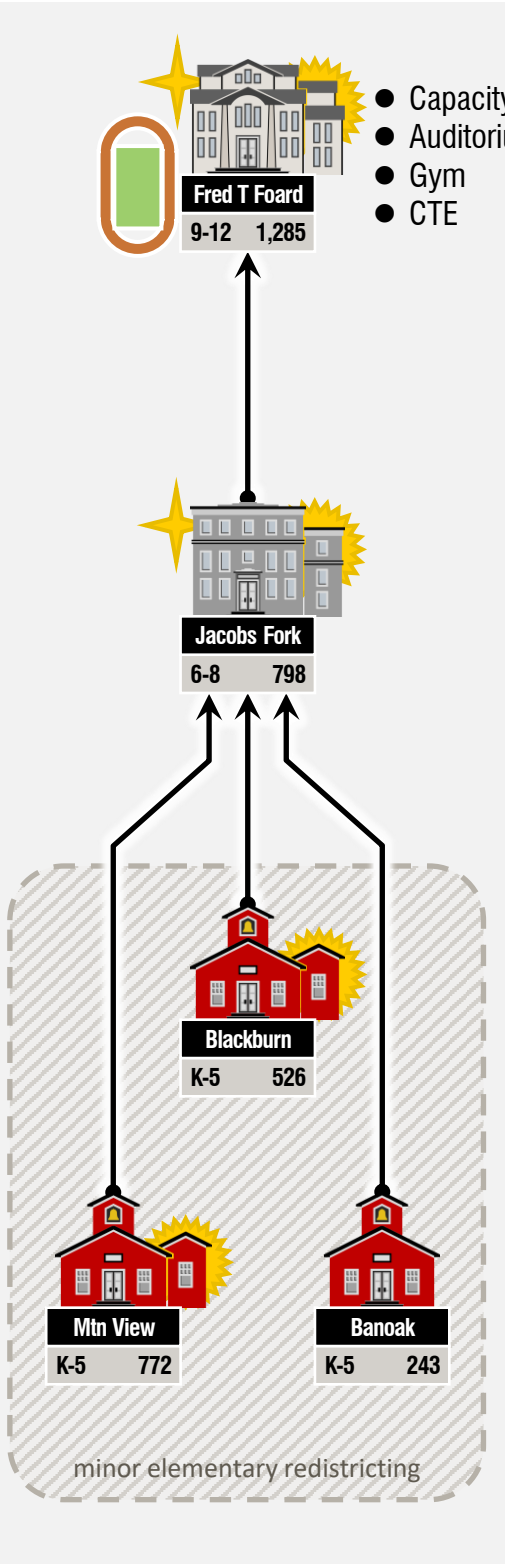
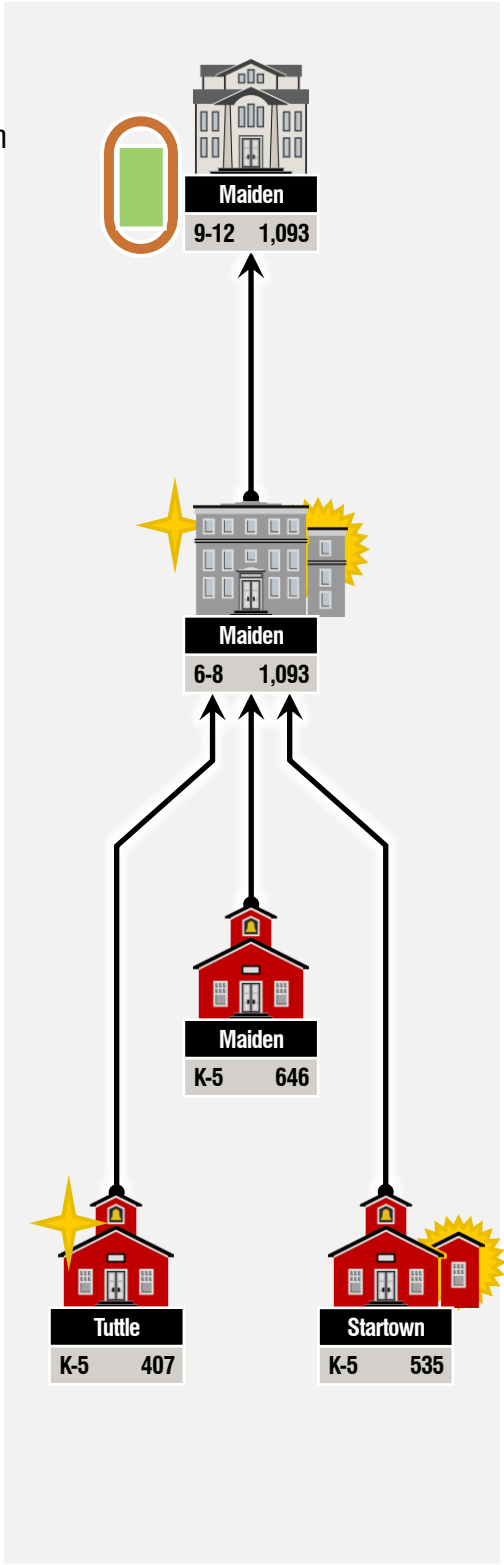
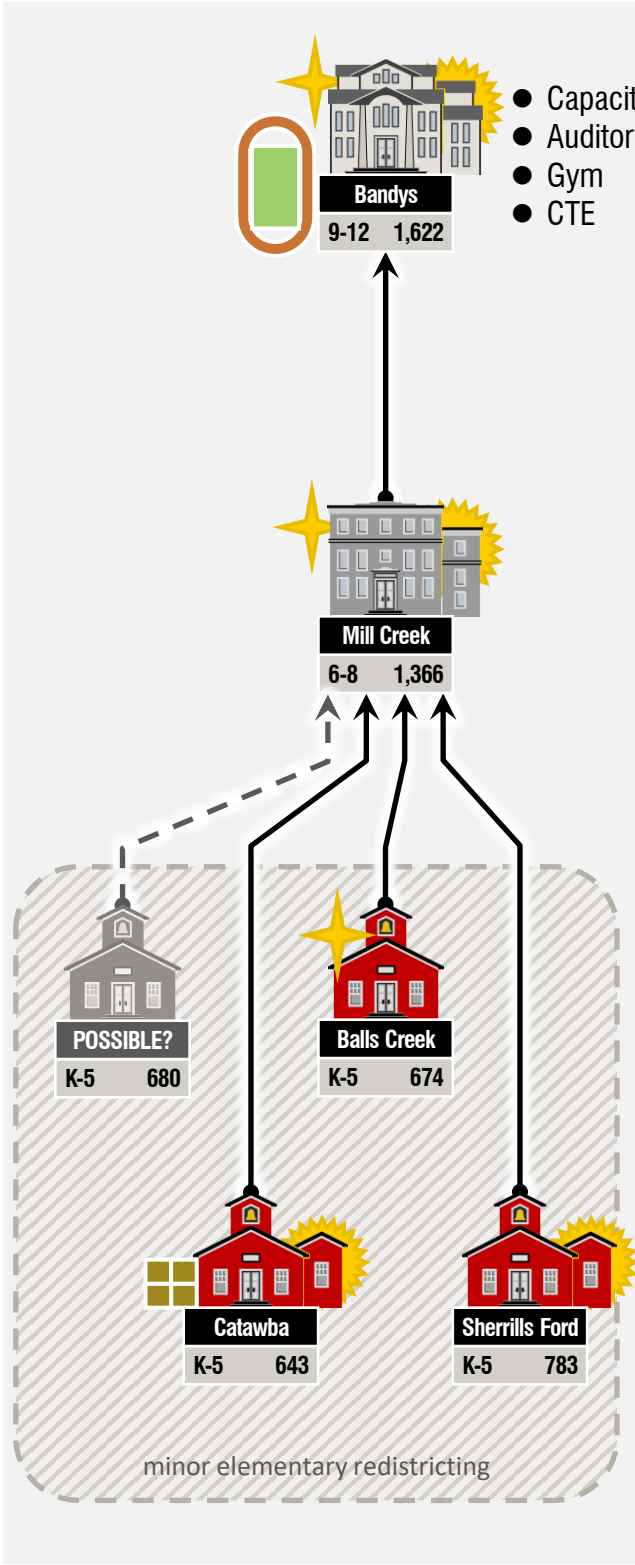
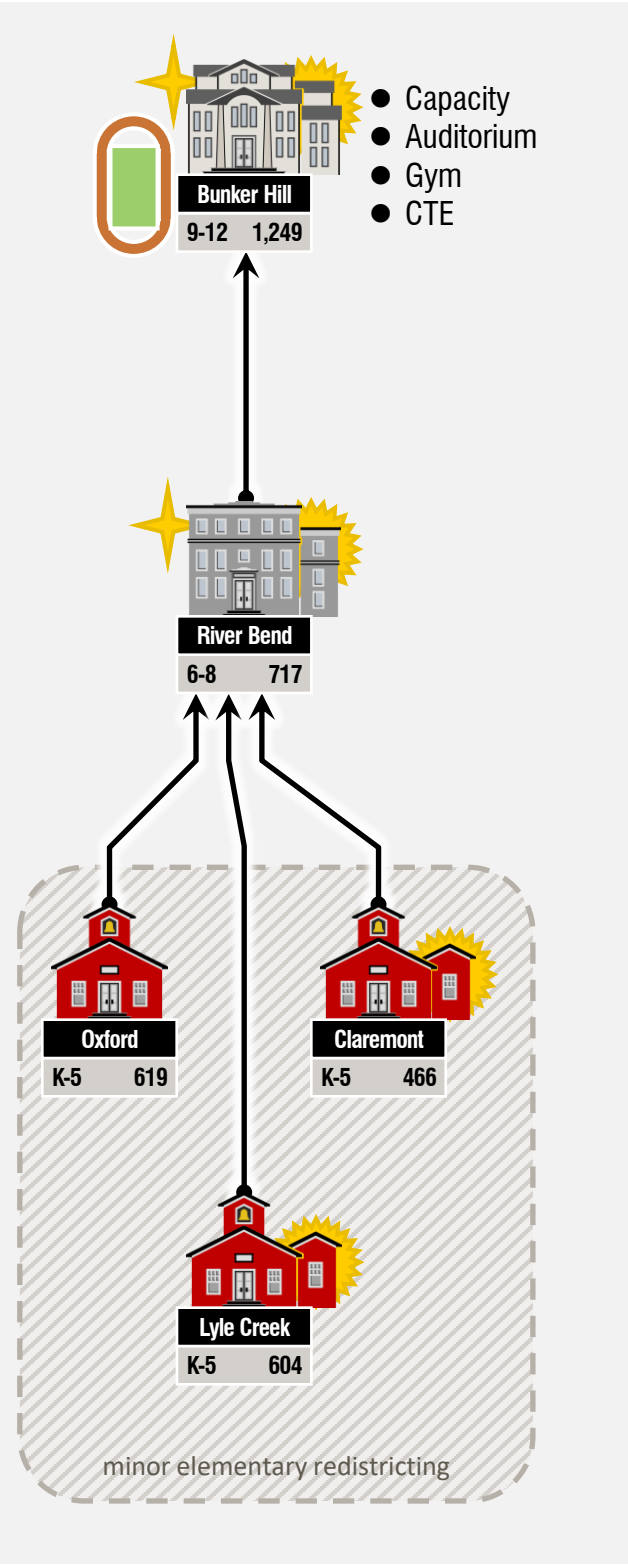
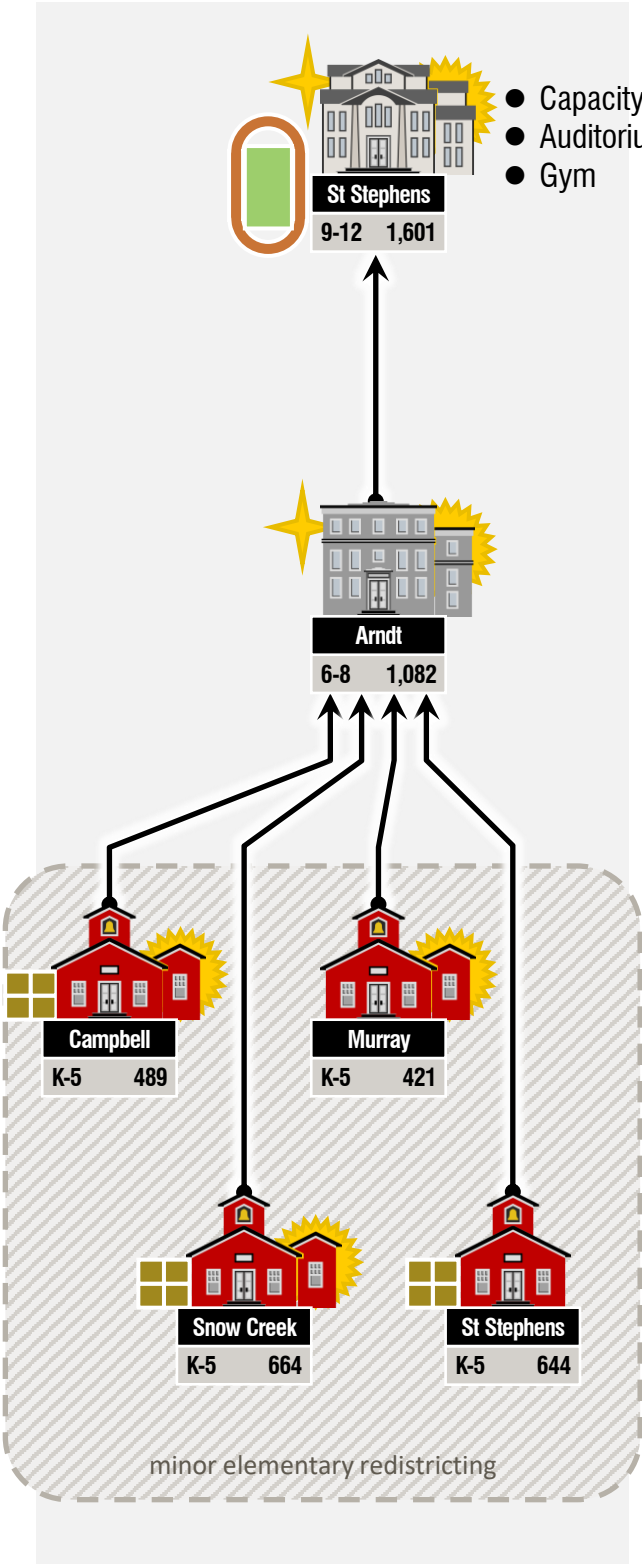
Maximum Buildout



Tentative Strategy for
Catawba County Schools

K-5/6-8 with HS Equity

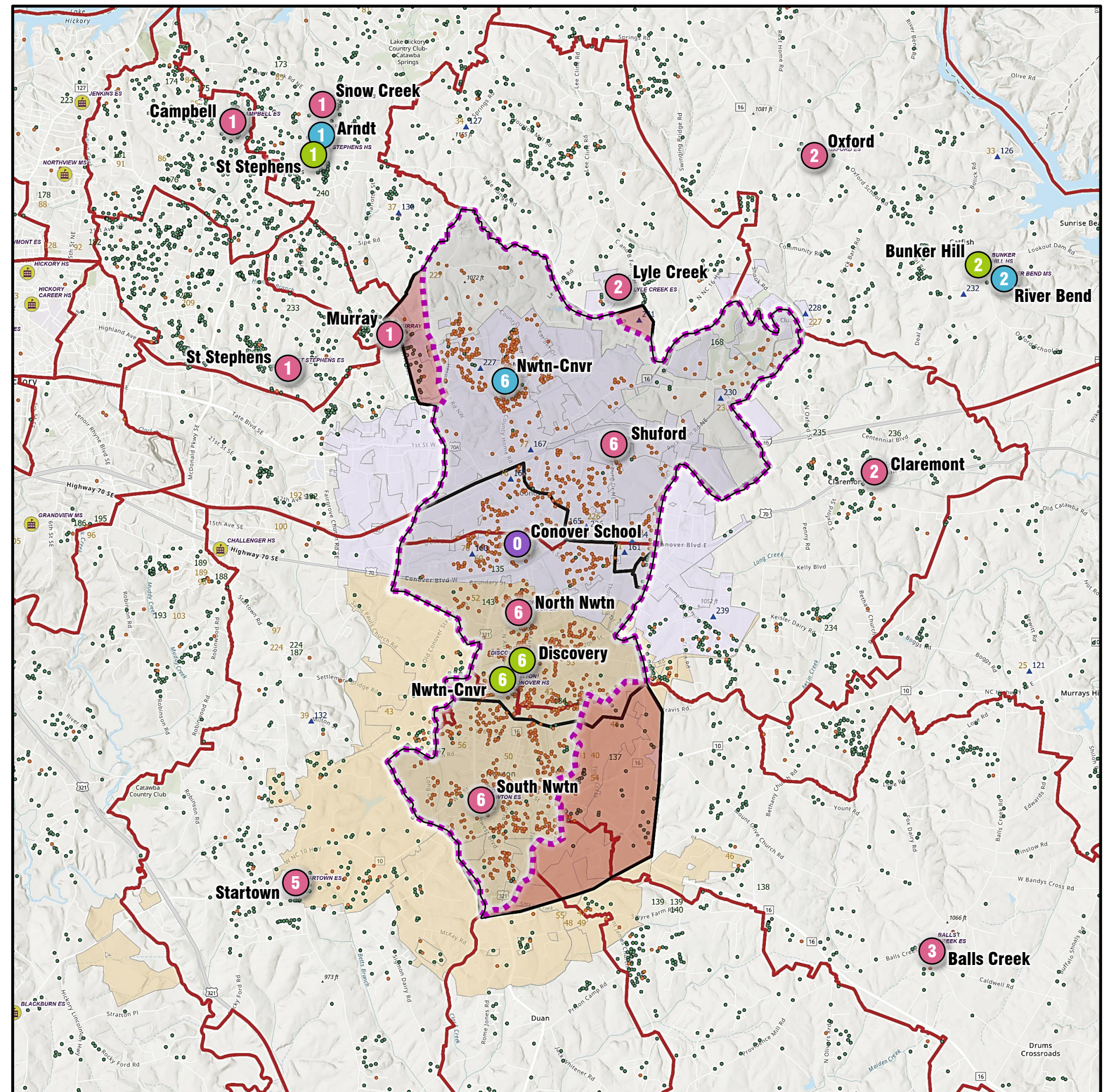
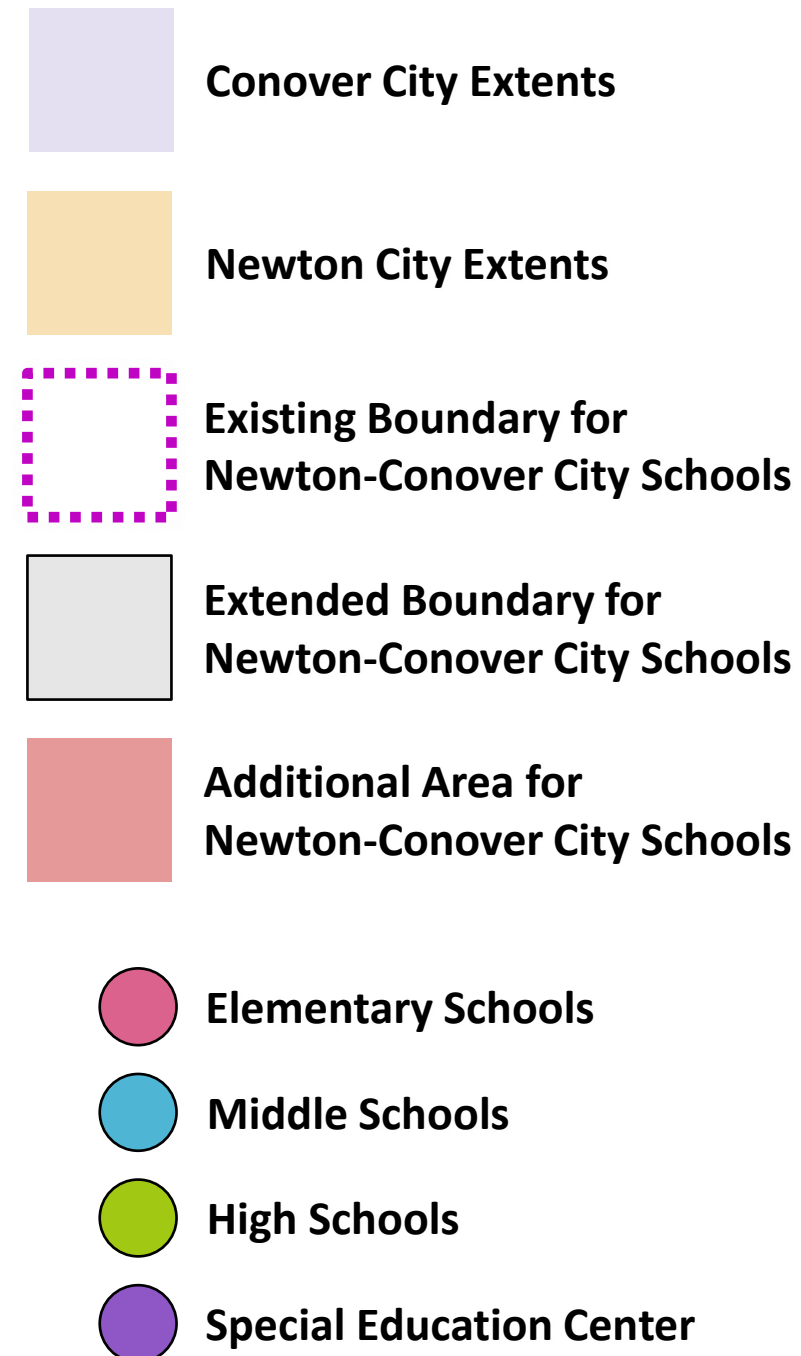
Grade Level		Schools	Seats	Buffer	Capacity	Renov SF	New SF	Cost
Elementary Schools	K-5	16	10,756	@ 85%	9,136	TBD	TBD	\$ TBD
Middle Schools	6-8	5	5,944	@ 80%	4,755	TBD	TBD	\$ TBD
High Schools	9-12	5	8,566	@ 80%	6,850	TBD	TBD	\$ TBD
Total		26	25,268		20,741	TBD	TBD	\$ TBD



Newton-Conover City Schools Capacity & Utilization

NCCS Facility		Capacity			Utilization	Enrollment 2024/25
		Gross	Buffer	Adjusted		
Newton Conover	Shuford ES	446	85 %	382	90.13%	402
Newton Conover	South Newton ES	439	85 %	375	71.30%	313
Newton Conover	North Newton ES	536	85 %	459	71.64%	384
Newton Conover	Newton Conover MS	900	80 %	727	62.11%	559
Newton Conover	Newton Conover HS	1,579	80 %	1,265	45.73%	722
Newton Conover		3,900		3,208	61.03%	2,380
		Excludes Discovery/Conover			Excludes Discovery/Conover	

Ease Capacity Pressure through Optimized Facility Use:



Ease Capacity Pressure through Optimized Facility Use:

Adjust boundaries as needed to fill Newton-Conover schools within target buffers to accommodate Catawba County's immediate need as expeditiously as possible.

Facility		Capacity			Enrollment		Option Change		Enrollment		Newton	Newton	Newton	Newton	Newton	Option Changes		Original	Total	Enrollment	
		Gross	Buffer	Adjusted	Utilization	2024/25	Out	In	Utilization	w/Transfers						Out	In	Still In	Change	Utilization	w/New Devs
St Stephens	Campbell ES	440	85 %	375	94.55%	416	- 7		92.95%	409	7					- 7					409
St Stephens	Snow Creek ES	552	85 %	474	86.78%	479	- 8		85.33%	471											471
St Stephens	St Stephens ES	712	85 %	610	87.08%	620	- 12		85.39%	608											608
St Stephens	Murray ES	424	85 %	363	73.11%	310	- 39		63.92%	271											271
St Stephens	Arndt MS	986	80 %	797	92.09%	908	- 25		89.55%	883				6		- 6					883
St Stephens	St Stephens HS	1,771	80 %	1,424	70.02%	1,240	- 48		67.31%	1,192					6	- 6					1,192
Bunker Hill	Oxford ES	669	85 %	569	70.25%	470	- 14		68.16%	456											456
Bunker Hill	Lyle Creek ES	532	85 %	456	66.54%	354	- 13		64.10%	341	28					- 28					341
Bunker Hill	Claremont ES	445	85 %	378	86.74%	386	- 11		84.27%	375											375
Bunker Hill	River Bend MS	856	80 %	691	76.75%	657	- 17		74.77%	640				21		- 21					640
Bunker Hill	Bunker Hill HS	1,250	80 %	1,008	68.00%	850	- 16		66.72%	834					26	- 26					834
Bandys	Catawba ES	514	85 %	440	73.15%	376	- 3		72.57%	373											373
Bandys	Balls Creek ES	750	85 %	646	76.93%	577	- 70		67.60%	507		22				- 22					507
Bandys	Sherrills Ford ES	708	85 %	602	77.54%	549			77.54%	549											549
Bandys	Mill Creek MS	845	80 %	678	86.04%	727	- 49		80.24%	678					18	- 18					678
Bandys	Bandys HS	1,484	80 %	1,193	63.54%	943	- 59		59.57%	884						- 21					884
Maiden	Tuttle ES	445	85 %	380	71.46%	318	- 7		69.89%	311											311
Maiden	Maiden ES	751	85 %	649	61.38%	461	- 5		60.72%	456		35				- 35					456
Maiden	Startown ES	599	85 %	515	73.96%	443	- 13		71.79%	430			21			- 21					430
Maiden	Maiden MS	590	80 %	479	110.85%	654	- 12		108.81%	642					45	- 45					642
Maiden	Maiden HS	1,366	80 %	1,099	63.32%	865	- 15		62.23%	850						- 55					850
Fred Foard	Blackburn ES	481	85 %	413	87.11%	419	- 3		86.49%	416											416
Fred Foard	MountainView ES	748	85 %	641	81.55%	610	- 4		81.02%	606											606
Fred Foard	Banoak ES	263	85 %	224	95.82%	252	- 1		95.44%	251											251
Fred Foard	Jacobs Fork MS	865	80 %	694	80.12%	693	- 4		79.65%	689											689
Fred Foard	Foard HS	1,412	80 %	1,138	64.66%	913			64.66%	913											913
Newton Conover	Shuford ES	446	85 %	382	90.13%	402	- 73	97	95.52%	426	53		10			- 10	35	53	78	113.00%	504
Newton Conover	South Newton ES	439	85 %	375	71.30%	313	- 43	120	88.84%	390		17	7			- 7	57	17	67	104.10%	457
Newton Conover	North Newton ES	536	85 %	459	71.64%	384	- 33	142	91.98%	493			27				38	27	65	104.10%	558
Newton Conover	Newton Conover MS	900	80 %	727	62.11%	559		107	74.00%	666					96		90	96	186	94.67%	852
Newton Conover	Newton Conover HS	1,604	80 %	1,285	45.01%	722		138	53.62%	860							108	108	216	67.08%	1,076
Combined District		24,383		20,164	73.29%	17,870	- 604	604	73.29%	17,870						- 328	328	301	612	75.80%	18,482

NCCS Facility		Capacity			Utilization	2024/25	In from other NCCS	In from CCS	Utilization	w/Transfers
		Gross	Buffer	Adjusted						
Newton Conover	Shuford ES	446	85 %	382	90.13%	402	- 56	80	95.52%	426
Newton Conover	South Newton ES	439	85 %	375	71.30%	313	- 18	95	88.84%	390
Newton Conover	North Newton ES	536	85 %	459	71.64%	384	74	35	91.98%	493
Newton Conover	Newton Conover MS	900	80 %	727	62.11%	559		107	74.00%	666
Newton Conover	Newton Conover HS	1,604	80 %	1,285	45.01%	722		138	53.62%	860
Newton Conover		3,925		3,228	60.64%	2,380		455	72.23%	2,835
		Excludes Discovery/Conover			Excludes Discovery/Conover		149 NCCS students moved within NCCS			

Shifting within NCCS	In from CCS	Not Shifting within NCCS	Total Change	Utilization	w/New Devs
- 10	35	53	78	113.00%	504
- 7	57	17	67	104.10%	457
17	21	27	65	104.10%	558
	90	96	186	94.67%	852
	108	108	216	67.08%	1,076
	311	301	612	87.82%	3,447
17	NCCS students in different ES			w/o Option	2,395

Ease Capacity Pressure through Optimized Facility Use: Changes to Utilization

NCCS Facility	
Newton Conover	Shuford ES
Newton Conover	South Newton ES
Newton Conover	North Newton ES
Newton Conover	Newton Conover MS
Newton Conover	Newton Conover HS
Newton Conover	

Existing Students Disrupted	
Option Change	
Out	In

After Transfers	
Enrollment	
Utilization	w/Transfers

Students from New Developments (Year 10)			
Option Changes		Original	Total
Out	In	Still In	Change

Enrollment	
Utilization	w/New Devs

In from other NCCS	In from CCS
- 56	80
- 18	95
74	35
	107
	138

Utilization	w/Transfers
95.52%	426
88.84%	390
91.98%	493
74.00%	666
54.46%	860

Shifting within NCCS	In from CCS	Not Shifting within NCCS	Total Change
- 10	35	53	78
- 7	57	17	67
17	21	27	65
	90	96	186
	108	108	216

Utilization	w/New Devs
113.00%	504
104.10%	457
104.10%	558
94.67%	852
68.14%	1,076

	455
	72.69%
	2,835

	311	301	612
--	-----	-----	-----

	88.38%
	3,447

149	NCCS students moved within NCCS
-----	---------------------------------

17	NCCS students in different ES
----	-------------------------------

w/o Option	2,395
------------	-------

Net increase of redirected students is 766

Ease Capacity Pressure through Optimized Facility Use: Capital Cost Offsets

CCS Students Served by

Newton-Conover Schools

(SF per Pupil x 1.58 circulation)

Immediate

● Elementary	210 students	@ 58 sf/pp	22,562 SF	@ \$ 450 / SF	\$ 10,152,900
● Middle	107 students	@ 68 sf/pp	11,496 SF	@ \$ 450 / SF	\$ 5,173,200
● High School	138 students	@ 78 sf/pp	17,007 SF	@ \$ 450 / SF	\$ 7,653,150
● Project Costs				@ 15%	3,446,888
➔ TOTAL	455 students		51,065 SF		\$ 26,426,138

Future CCS Growth Served by

Newton-Conover Schools

(SF per Pupil x 1.58 circulation)

10-Year Growth

● Elementary	113 students	@ 58 sf/pp	10,355 SF	@ \$ 450 / SF	\$ 4,659,750
● Middle	90 students	@ 68 sf/pp	9,670 SF	@ \$ 450 / SF	\$ 4,351,500
● High School	108 students	@ 78 sf/pp	13,309 SF	@ \$ 450 / SF	\$ 5,989,050
● Project Costs				@ 15%	\$ 2,250,045
➔ TOTAL	311 students		33,334 SF		\$ 17,247,345

Avoided Capital Costs from the Utilization of Existing Capacity

766 Students

\$ 43,673,483

Ease Capacity Pressure through Optimized Facility Use:**Advantages**

- Space available immediately to accommodate Catawba County Schools growth; allows more planning time and flattens spending curve
- Catawba County Schools capital improvement costs partially avoided through using existing capacity in Newton Conover City Schools
- Fixed facility operations & maintenance costs offset by increased enrollment – lower cost per student county-wide
- School budgets for staffing positively impacted by student enrollment growth; programming can be restored in sciences, STEM, etc.
- Staffing stability and recruitment improves (recruiting teachers for districts with declining enrollment is challenging)

Challenges

- Shift in elementary attendance areas required to accommodate Shuford growth, balance students from Murray or St Stephens Elementaries
- Newton-Conover High school remains under-utilized
- Current Newton-Conover City Schools facilities may return to larger class sizes as a result of optimization
- Possible loss of autonomy for Newton-Conover Schools under mantle of combined management



Regional Educational Facilities Alignment



Exploring Options



County Commissioners' Work Session

M&KISSICK ASSOCIATES

July 21, 2025